

REVER

side table

As a side table, versatile without excesses, Rever can fit perfectly the living room as much as the bedroom. The forms stem from the repetition of the circular shape, which turns into an abstract sign in its total black livery. The displacement of the tops creates an asymmetry that makes it possible to bring the base closer to the seats or the bed to obtain a practical support surface.



The semi-cylindrical body in brass with a galvanic finish supports the support tops in black oak and travertine. The preciousness and the contrast between the materials give a bold character to the piece.

Rever goes well with seats and sofas from the Rossato Collection, it can be customized with a wide range of marbles, metals and woods.

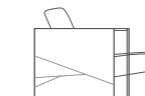




IT MATCHES *well with*



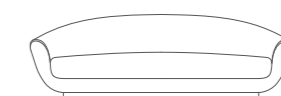
ELIZABETH



MARY

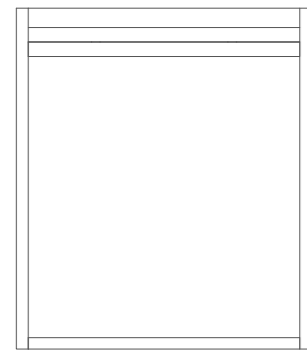


KEATON ARMCHAIR

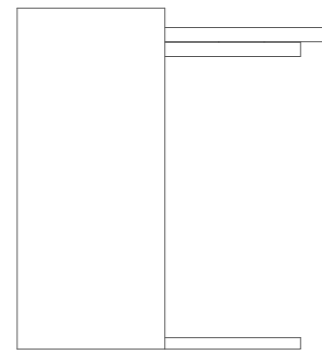


KEATON CURVED

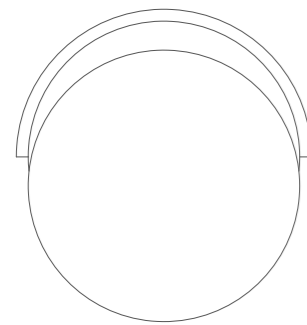
INSPIRATION 18 →



60
23 5/8"



52
21 2/32"

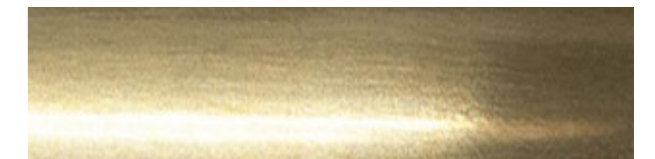


55
21 7/16"

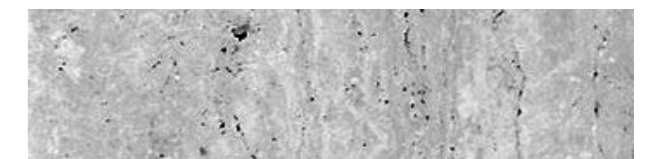
Materials and finishes



BLACK STAINED MAPLE WOOD VENEER MATT FINISH



BRUSHED BRASS



TRAVERTINE MARBLE

All furniture belonging to Rossato Home Collection are meant to be unique pieces. Any detail or finish may be fully customized according to client's specification.