



JACKIE 2

armchair

The Jackie 2 armchair is reminiscent of classic mid-century leather armchairs, but with a modern and recognizable profile. Its design is suitable for both contemporary interiors and more classic interiors.

The inverted V-shaped tubular legs are in polished and satin brass and are also reflected in the design of the pouf.

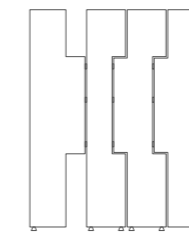
Its important dimensions make it an ideal piece to be inserted in a living composition, in an office as an armchair to take a moment of relaxation or as a comfortable waiting seat.

The quilted backrest emphasizes the vintage taste and also becomes a distinctive element of the Jackie armchairs. In this version, the dark gray matte leather is combined with tone-on-tone stitching, but can be extensively customized in materials and finishes. It is available in the armchair version with fan legs and in the taller and more slender chair version.





IT MATCHES *well with*



HUDSON



REVER

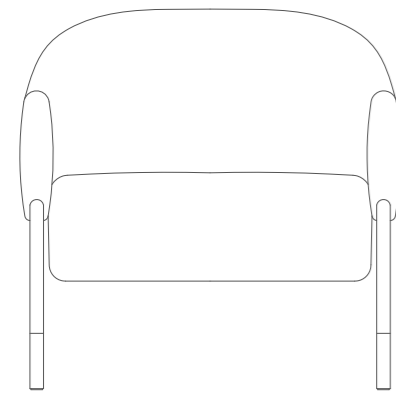


JACKIE POUF

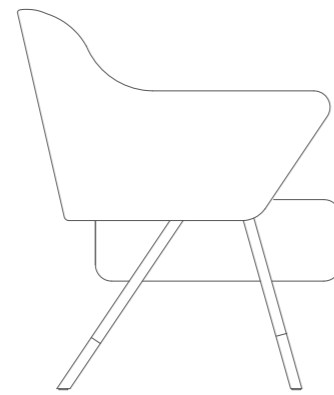


SOHO

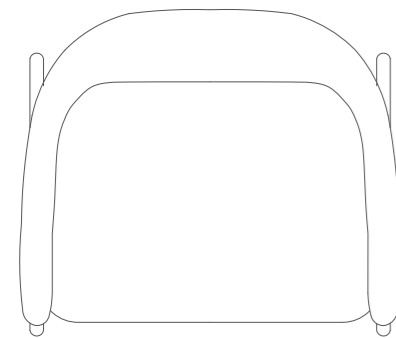
INSPIRATION 15 →



70
27 3/4"



70
27 3/4"

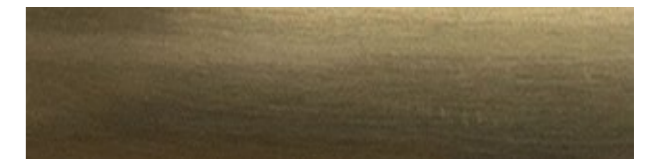


60
23 1/4"

Materials and finishes



MATTE DARK GREY LEATHER

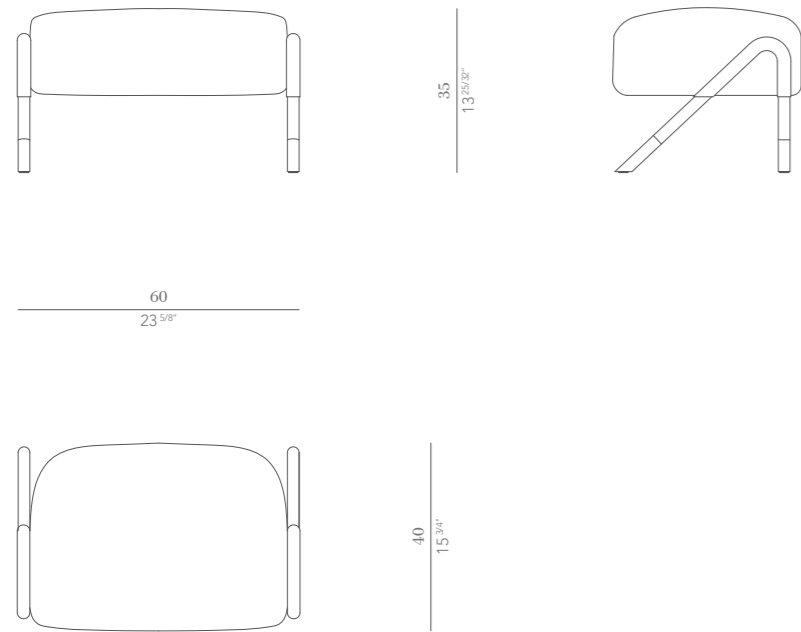


POLISHED BRASS



SATIN BRASS

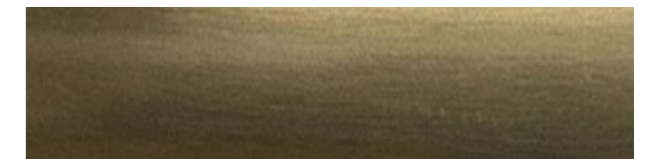
*All furniture belonging to Rossato Home
Collection are meant to be unique pieces.
Any detail or finish may be fully customized
according to client's specification.*



Materials and finishes



MATTE DARK GREY LEATHER



POLISHED BRASS



SATIN BRASS